



SMA - 3800
MIRROR STAINLESS STEEL AIRSTREAM FOOD TRAILER

| | |
|--------------------|---|
| Product Name | Mirror stainless steel airstream food trailer |
| Model Number | SMA-3800 |
| Certification | COC/DOT/CE/Cargo X/SGS/ISO9001 |
| Voltage | 110V/220V/380V |
| Material | Stainless steel |
| Color | Gold/silver/rose gold |
| Size | 12.46*7.08*8.2ft |
| Tire | 165R14 tires |
| MOQ | 1 Piece |
| Optional Functions | Coffee,fast food,steaks,tacos,drink,Bubble tea, ice-cream,hot dog,pizza,kebab,beer,wine,snack, babershop,pet grooming,games,party,meeting |
| Water System | water sinks,water pump,water heater,clean water tank,waste water tank,water pipe,water inlet and outnet |
| Electric System | plugs,electric pipe,electric cabinet,external power source,seperate switch,lailight system,heights |



PRODUCT CATEGORY

Dimension & Weight



SMA-3000

- 1.Dimension(Only body)
 - 3000*2160*2500mm
 - 9.84*7.08*8.2ft
- 2.Weight
 - 900KG/1985LB



SMA-3500

- 1.Dimension(Only body)
 - 3500*2160*2500mm
 - 11.48*7.08*8.2ft
- 2.Weight
 - 1050KG/2315LB



SMA-3800

- 1.Dimension(Only body)
 - 3800*2160*2500mm
 - 12.46*7.08*8.2ft
- 2.Weight
 - 1100KG/2430LB



SMA-4000

- 1.Dimension(Only body)
 - 4000*2160*2500mm
 - 13.12*7.08*8.2ft
- 2.Weight
 - 1300KG/2870LB



SMA-4500

- 1.Dimension(Only body)
 - 4500*2160*2500mm
 - 14.76*7.08*8.2ft
- 2.Weight
 - 1400KG/3090LB



SMA-5000

- 1.Dimension(Only body)
 - 5000*2160*2500mm
 - 16.4*7.08*8.2ft
- 2.Weight
 - 1500KG/3310LB



SMA-5500

- 1.Dimension(Only body)
 - 5500*2160*2500mm
 - 18*7.08*8.2ft
- 2.Weight
 - 1600KG/3550LB



SMA-6000

- 1.Dimension(Only body)
 - 6000*2160*2500mm
 - 20*7.08*8.2ft
- 2.Weight
 - 1800KG/3970LB



**SMA - 4000
MIRROR STAINLESS STEEL AIRSTREAM FOOD TRAILER**



1. The latest design style, independent design team for your service.
2. Four materials can be selected. mirror stainless steel, brushed stainless steel, iron plate, galvanized plate.
3. Unique electrophoresis technology can prevent rusting and extend the service life of the trailer.



4. Personalized customization: different colors options, logo sticker, sliding window, led advertising light box.
5. Internal cabinet 304 stainless steel material, in line with food safety standards, not rust.
6. CE certificate to ensure quality, can meet more than 50 countries standards.

| | |
|--------------------|--|
| Product Name | Mirror stainless steel airstream food trailer |
| Model Number | SMA-4000 |
| Certification | COC/DOT/CE/Cargo X/SGS/ISO9001 |
| Voltage | 110V/220V/380V |
| Material | Stainless steel |
| Color | Gold/silver/rose gold |
| Size | 13.12*7.08*8.2ft |
| Tire | 165R14 tires |
| MOQ | 1 Piece |
| Optional Functions | Coffee, fast food, steaks, tacos, drink, Bubble tea, ice-cream, hot dog, pizza, kebab, beer, wine, snack, babershop, pet grooming, games, party, meeting |
| Water System | water sinks, water pump, water heater, clean water tank, waste water tank, water pipe, water divider, water inlet and outlet |
| Electric System | plugs, electric pipe, electric cabinet, external power source, separate switch, light system, heights |



SHOW DETAILS

Standard configuration



TYRE

It uses 165, 14-inch 5-hole high-speed tires, and the wheels are made of aluminum.



JOINTING PROCESS

Using a seamless process between the workbench and the wall, no glue is required, beautiful and easy to clean.



CUSTOM CABINET

Double side stainless steel cabinet with double cabinet door, bottom seal stainless steel plate, with ring lock.



TORSION AXIS

The torsion shaft used can bear 2 tons each.



DOOR LOCK

Rv door lock, internal and external lock double protection, more secure.

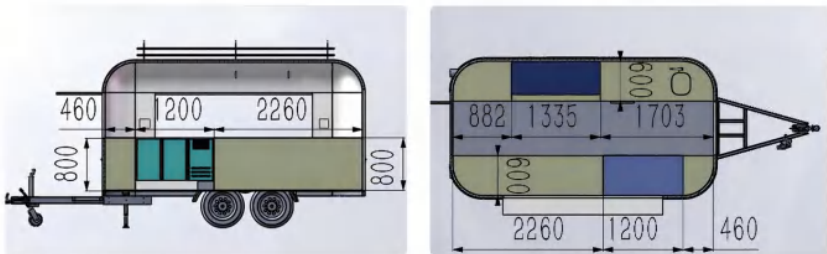
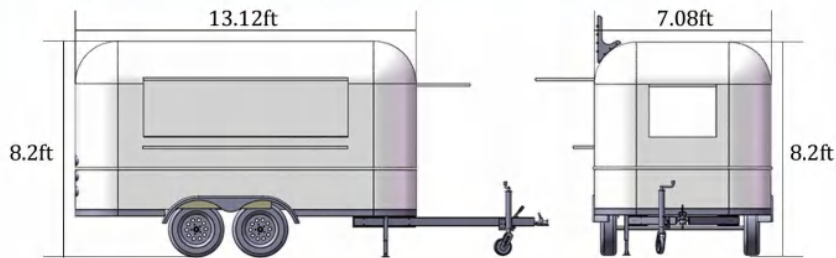


RAIN CURTAIN

Double rain curtain and equipped with sealing strip, sealing effect is better, rain-tight.



**SMA - 4000
GOLD MIRROR STAINLESS STEEL AIRSTREAM FOOD TRAILER**



SHOW DETAILS

Standard configuration



RIVET

Body rivets are galvanized rivets, rust and rain proof.



TELESCOPIC PEDAL

It uses a retractable pedal for RV, which can weigh 200kg.



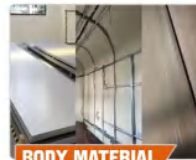
JACK

The use of high-bearing jacks, each weighing 1 ton.



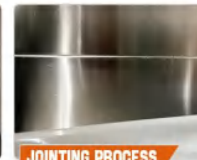
TORSION AXIS

The torsion shaft used can bear 2 tons each.



BODY MATERIAL

The walls are made of 304 stainless steel, foamed polyurethane insulation and 304 brushed stainless steel.



JOINTING PROCESS

Using a seamless process between the workbench and the wall, no glue is required, beautiful and easy to clean.



CUSTOM CABINET

Double side stainless steel cabinet with double cabinet door, bottom seal stainless steel plate, with ring lock.



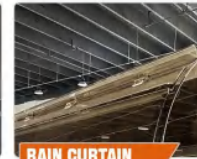
DOOR LOCK

Rv door lock, internal and external lock double protection, more secure.



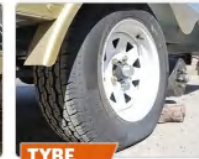
WINDOW LATCH

The window uses the latch of the RV, which is easy to operate and more secure.



RAIN CURTAIN

Double rain curtain and equipped with sealing strip, sealing effect is better, rain-tight.



TYRE

It uses 165, 14-inch 5-hole high-speed tires, and the wheels are made of aluminum.



TAPE LIGHTS

Use aluminum profile groove, more smooth and stronger, long service light



INTERIOR DESIGN

Inside can install different cooking equipment to meet different business needs such as refrigerator, coffee machine, fryer, griddle, exhaust fan, oven etc



TOW BAR

On the front of tow bar, we equipped double safety chains. On the side of tow bar, we equipped bigger guide wheel. The whole tow bar all electrophoretic. The coupling and hitch loading weight all 2 tons. At the same time, we can provide AL-KO braking systems.



**SMA - 4000
COLOURFUL AIRSTREAM FOOD TRAILER**

| | |
|--------------------|---|
| Product Name | Colourful airstream food trailer |
| Model Number | SMA-4000 |
| Certification | COC/DOT/CE/Cargo X/SGS/ISO9001 |
| Voltage | 110V/220V/380V |
| Material | Galvanized sheet |
| Color | Customize colors according to ral color cards |
| Size | 13.12*7.08*8.2ft |
| Tire | 165R14 tires |
| MOQ | 1 Piece |
| Optional Functions | Coffee,fast food,steaks,tacos,drink,Bubble tea, ice-cream,hot dog,pizza,kebab,beer,wine,snack, babershop,pet grooming,games,party,meeting |
| Water System | water sinks,water pump,water heater,clean water tank,waste water tank,water pipe,water divider,water inlet and outnet |
| Electric System | plugs,electric pipe,electric cabinet,external power source,seperate switch,lailight system,heights |



SHOW DETAILS

Standard configuration



WINDOW LATCH

The window uses the latch of the RV, which is easy to operate and more secure.



JACK

The use of high-bearing jacks, each weighing 1 ton.



TORSION AXIS

The torsion shaft used can bear 2 tons each.



JOINING PROCESS

Using a seamless process between the workbench and the wall, no glue is required, beautiful and easy to clean.



CUSTOM CABINET

Double side stainless steel cabinet with double cabinet door, bottom seal stainless steel plate, with ring lock.



DOOR LOCK

Rv door lock, internal and external lock double protection, more secure.



RAIN CURTAIN

Double rain curtain and equipped with sealing strip, sealing effect is better, rain-tight.



TYRE

It uses 165, 14-inch 5-hole high-speed tires, and the wheels are made of aluminum.



TAPE LIGHTS

Use aluminum profile groove, more smooth and stronger, long service light

WATER SYSTEM

Comply with multinational standards



American standard

3+1 sink



European standard

Two sinks



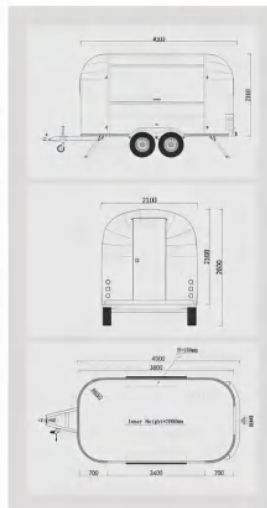
Australian standard

2+1 sink



**SMA - 3500
COLOURFUL AIRSTREAM FOOD TRAILER**

| | |
|--------------------|---|
| Product Name | Colourful airstream food trailer |
| Model Number | SMA-3500 |
| Certification | COC/DOT/CE/Cargo X/SGS/ISO9001 |
| Voltage | 110V/220V/380V |
| Material | Galvanized sheet |
| Color | Colors can be customized |
| Size | 11.48*7.08*8.2ft |
| Tire | 165R14 tires |
| MOQ | 1 Piece |
| Optional Functions | Coffee,fast food,steaks,tacos,drink,Bubble tea, ice-cream,hot dog,pizza,kebab,beer,wine,snack, babershop,pet grooming,games,party,meeting |
| Water System | water sinks,water pump,water heater,clean water tank,waste water tank,water pipe,water divider,water inlet and outlet |
| Electric System | plugs,electric pipe,electric cabinet,external power source,seperate switch,laillight system,heights |



SHOW DETAILS

Standard configuration



TIRE

- 2 axles with 4 X 165R14 wheels.
- High-speed radial tires. White rim



VERTICAL JACKS

- Strong support capacity.
- One pcs can bear 1.5 tons. Can folding



TAILLIGHT SYSTEM

- Brake lamp and Drive lamp
- Turn left and right lamp
- Triangle alarm light
- Number plate light



CABINET

- Stainless steel workbench with cabinet, double layers door more strong and durable, Will install workbench refrigerator.



WATER SYSTEM

- EU Double sinks, AU 2+1 water sinks, USA 3+1 water sinks with hot and cold water.
- Make standard as per different



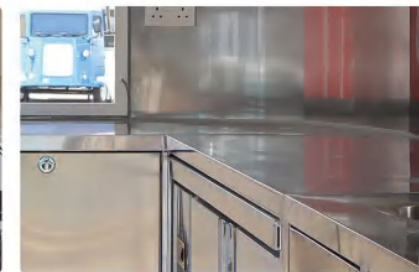
BRAKE SYSTEM

- Material: A frame galvanized seamless tube with mechanical brake and hand brake
- Safty chains at both sides



INTERNAL DESIGN

Inside can install different cooking equipment to meet different business needs such as refrigerator, coffee machine, fryer, griddle, exhaust fan, oven etc



STAINLESS STEEL WORKBENCH

Stainless steel workbench with cabinet, double layers door, more strong and durable, Will install workbench refrigerator same level as workbench, and make built in type equipment



**SMA - 5300
MATT STAINLESS STEEL AIRSTREAM FOOD TRAILER**



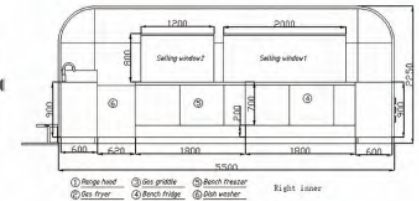
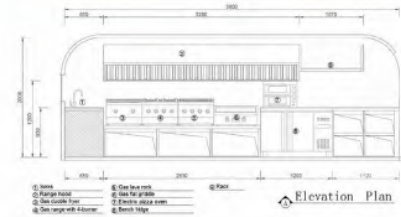
1. Four materials can be selected Aluminum plate, mirror stainless steel, Matt stainless steel, galvanized sheet.
2. Unique electrophoresis technology can prevent rusting and extend the service life of the trailer.
3. Personalized customization: logo sticker, sliding window, led

4. Personalized customization: different colors options, logo sticker, sliding window, led advertising light box.
5. Internal cabinet 304 stainless steel material, in line with food safety standards, not rust.
6. CE certificate to ensure quality, can meet more than 85 countries standards.



DRAWING

2D & 3D



SHOW DETAILS

Standard configuration



RIVET
Body rivets are galvanized rivets, rust and rain proof.



TELESCOPIC PEDAL
It uses a retractable pedal for RV, which can weigh 200kg.



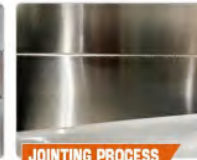
JACK
The use of high-bearing jacks, each weighing 1 ton.



TORSION AXIS
The torsion shaft used can bear 2 tons each.



RAIN CURTAIN
Double rain curtain and equipped with sealing strip, sealing effect is better, rain-tight.



JOINTING PROCESS
Using a seamless process between the workbench and the wall, no glue is required, beautiful and easy to clean.



CUSTOM CABINET
Double side stainless steel cabinet with double cabinet door, bottom seal stainless steel plate, with ring lock.

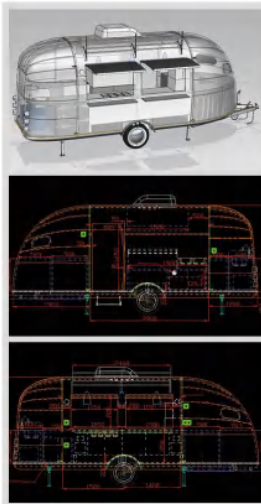


STAR LIGHT
Exquisite star lamp, each lamp bead has an independent light hole.



**SMA - 5000
BOWLUS AIRSTREAM FOOD TRAILER**

| | |
|--------------------|---|
| Product Name | Bowlus airstream food trailer |
| Model Number | SMA-5000 |
| Certification | COC/DOT/CE/Cargo X/SGS/ISO9001 |
| Voltage | 110V/220V/380V |
| Material | Stainless steel |
| Color | Gold/silver/rose gold |
| Size | 16.4*7.08*8.2ft |
| Tire | 165R14 tires |
| MOQ | 1 Piece |
| Optional Functions | Coffee,fast food,steaks,tacos,drink,Bubble tea, ice-cream,hot dog,pizza,kebab,beer,wine,snack, babershop,pet grooming,games,party,meeting |
| Water System | water sinks,water pump,water heater,clean water tank,waste water tank,water pipe,water divider,water inlet and outnet |
| Electric System | plugs,electric pipe,electric cabinet,external power source,seperate switch,lalight system,heights |



SHOW DETAILS

Standard configuration



RIVET

Body rivets are galvanized rivets, rust and rain proof.



TELESCOPIC PEDAL

It uses a retractable pedal for RV, which can weigh 200kg.



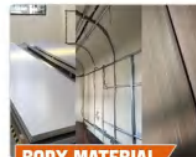
JACK

The use of high-bearing jacks, each weighing 1 ton.



TORSION AXIS

The torsion shaft used can bear 2 tons each.



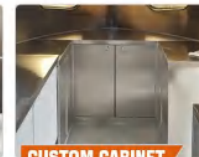
BODY MATERIAL

The walls are made of 304 stainless steel, foamed polyurethane insulation and 304 brushed stainless steel.



JOINTING PROCESS

Using a seamless process between the workbench and the wall, no glue is required, beautiful and easy to clean.



CUSTOM CABINET

Double side stainless steel cabinet with double cabinet door, bottom seal stainless steel plate, with ring lock.



DOOR LOCK

Rv door lock, internal and external lock double protection, more secure.



WINDOW LATCH

The window uses the latch of the RV, which is easy to operate and more secure.



RAIN CURTAIN

Double rain curtain and equipped with sealing strip, sealing effect is better, rain-tight.



TYRE

It uses 165, 14-inch 5-hole high-speed tires, and the wheels are made of aluminum.



TAPE LIGHTS

Use aluminum profile groove, more smooth and stronger, long service light

WATER SYSTEM

Comply with multinational standards



American standard

3+1 sink



European standard

Two sinks



Australian standard

2+1 sink



**SMA - 5000
TRAILER BAR**



The airstream trailer bar is a suitable for tacos, steaks, drink, coffee, bubble tea, sandwich etc.

1. Mobile food truck business is popular in the food industry.
2. Mobile food truck easy to park, can start food business at anywhere.

3. The material is new, which is galvanized sheet. It is very strong.

4. Customized part/equipment acceptable in the Mobile food truck.



SHOW DETAILS

Standard configuration



BRAKE SYSTEM

Mechanical brakes, with the option of al-ko brakes.



TORSION AXIS

The torsion shaft used can bear 2 tons each.



JACK

The use of high-bearing jacks, each weighing 1 ton.



TYRE

It uses 165, 14-inch 5-hole high-speed tires, and the wheels are made of aluminum.



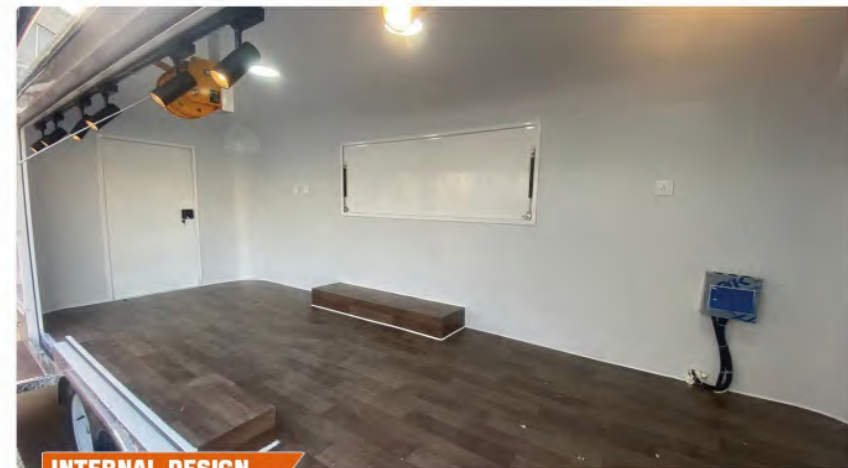
BODY MATERIAL

The walls are made of 304 stainless steel, foamed polyurethane insulation and 304 brushed stainless steel.



TAILLIGHT SYSTEM

Brake lamp, Drive lamp
Turn left & right lamp
Triangle alarm light
Number plate light



INTERNAL DESIGN

Inside can install different cooking equipment to meet different business needs such as refrigerator, coffee machine, fryer, griddle, exhaust fan, oven etc.



**SMAA - 4500
ALUMINUM AIRSTREAM FOOD TRAILER**



Aluminum airstream food trailer as the new model and material placed in the market.

1. We can design different style and size food truck with OEM service.
2. Aluminum airstream food trailer can paint different color as options.

3. The material is pretty strong, no rust, can be used for long time.
4. Customized part/equipment acceptable.



SHOW DETAILS

Standard configuration



TIRE

- 2 axles with 4 X 16S14 wheels.
- High-speed radial tires. White rim



VERTICAL JACKS

- Strong support capacity.
- One pcs can bear 1.5 tons. Can folding



TAILLIGHT SYSTEM

- Brake lamp and Drive lamp
- Turn left and right lamp
- Triangle alarm light
- Number plate light



WORKBENCH

- Stainless steel workbench with cabinet, double layers door more strong and durable, Will install workbench refrigerator.



STAR LIGHT

- Custom star light, each lamp bead has a separate light hole



BRAKE SYSTEM

- Material: A frame galvanized seamless tube with mechanical brake and hand brake
- Safty chains at both sides

WATER SYSTEM

Comply with multinational standards



American standard
3+1 sink



European standard
Two sinks



Australian standard
2+1 sink



**SMAA - 5500
ALUMINUM AIRSTREAM FOOD TRAILER**



Aluminum airstream food trailer as the new model and material placed in the market.

1. We can design different style and size food truck with OEM service.
2. Aluminum airstream food trailer can paint different color as options.



3. The material is pretty strong, no rust, can be used for long time.
4. Customized part/equipment acceptable.

SHOW DETAILS

Standard configuration



TIRE

- 2 axles with 4 X 165R14 wheels.
- High-speed radial tires. White rim



VERTICAL JACKS

- Strong support capacity.
- One pcs can bear 1.5 tons. Can folding



TAILLIGHT SYSTEM

- Brake lamp and Drive lamp
- Turn left and right lamp
- Triangle alarm light
- Number plate light



WORKBENCH

- Stainless steel workbench with cabinet, double layers door more strong and durable, Will install workbench refrigerator.



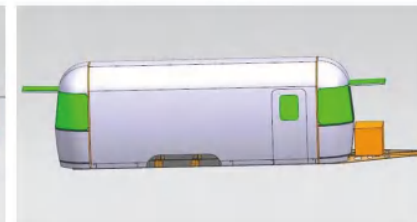
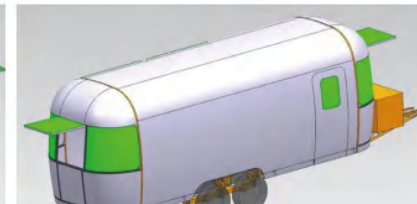
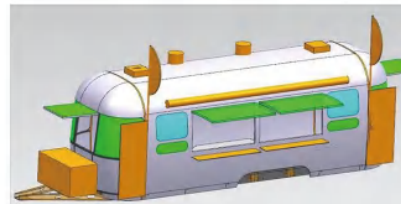
STAR LIGHT

- Custom star light, each lamp bead has a separate light hole



BRAKE SYSTEM

- Material: A frame galvanized seamless tube with mechanical brake and hand brake
- Safty chains at both sides





**SMA - 5000
AIRSTREAM STORE**



1. The latest design style, independent design team for your service.
2. Four materials can be selected: mirror stainless steel, brushed stainless steel, iron plate, galvanized plate.
3. Unique electrophoresis technology can prevent rusting and extend the service life of the trailer.

4. Personalized customization: different colors options, logo sticker, sliding window, led advertising light box.
5. Internal cabinet 304 stainless steel material, in line with food safety standards, not rust.
6. CE certificate to ensure quality, can meet more than 50 countries standards.



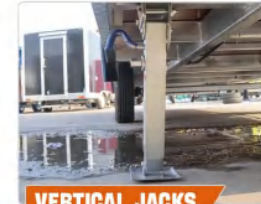
SHOW DETAILS

Standard configuration



TIRE

- 2 axles with 4 X 165R14 wheels.
- High-speed radial tires. White rim



VERTICAL JACKS

- Strong support capacity.
- One pcs can bear 1.5 tons. Can folding



TAILLIGHT SYSTEM

- Brake lamp and Drive lamp
- Turn left and right lamp
- Triangle alarm light
- Number plate light



WORKBENCH

- Stainless steel workbench with cabinet, double layers door more strong and durable, Will install workbench refrigerator.



WATER SYSTEM

- EU Double sinks, AU 2+1 water sinks, USA 3+1 water sinks with hot and cold water.
- Make standard as per different



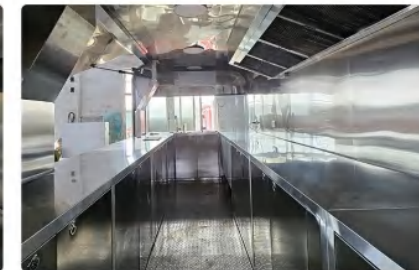
BRAKE SYSTEM

- Material: A frame galvanized seamless tube with mechanical brake and hand brake
- Safty chains at both sides



INTERNAL DESIGN

Inside can install different cooking equipment to meet different business needs such as refrigerator, coffee machine, fryer, griddle, exhaust fan, oven etc



STAINLESS STEEL WORKBENCH

Stainless steel workbench with cabinet, double layers door, more strong and durable, Will install workbench refrigerator same level as workbench, and make built in type equipment



**SMA - 5000
AIRSTREAM STORE**



1. The latest design style, independent design team for your service.
2. Four materials can be selected. mirror stainless steel, brushed stainless steel, iron plate, galvanized plate.
3. Unique electrophoresis technology can prevent rusting and extend the service life of the trailer.

4. Personalized customization: different colors options, logo sticker, sliding window, led advertising light box.

5. Internal cabinet 304 stainless steel material, in line with food safety standards, not rust.

6. CE certificate to ensure quality, can meet more than 50 countries standards.



SHOW DETAILS

Standard configuration



TIRE

- 2 axes with 4 X 165R14 wheels.
- High-speed radial tires. White rim



VERTICAL JACKS

- Strong support capacity.
- One pcs can bear 1.5 tons. Can folding



TAILLIGHT SYSTEM

- Brake lamp and Drive lamp
- Turn left and right lamp
- Triangle alarm light
- Number plate light



WORKBENCH

- Stainless steel workbench with cabinet, double layers door more strong and durable, Will install workbench refrigerator.



WATER SYSTEM

- EU Double sinks, AU 2+1 water sinks, USA 3+1 water sinks with hot and cold water.
- Make standard as per different



BRAKE SYSTEM

- Material: A frame galvanized seamless tube with mechanical brake and hand brake
- Safety chains at both sides



INTERNAL DESIGN

Inside can install different cooking equipment to meet different business needs such as refrigerator, coffee machine, fryer, griddle, exhaust fan, oven etc



STAINLESS STEEL WORKBENCH

Stainless steel workbench with cabinet, double layers door, more strong and durable, Will install workbench refrigerator same level as workbench, and make built in type equipment



SMA - 4500
MIRROR STAINLESS STEEL AIRSTREAM OFFICE TRAILER

| | |
|--------------------|---|
| Product Name | Mirror stainless steel airstream office trailer |
| Model Number | SMA-4500 |
| Certification | COC/DOT/CE/Cargo X/SGS/ISO9001 |
| Voltage | 110V/220V/380V |
| Material | Stainless steel |
| Color | Gold/silver/rose gold |
| Size | 14.76*7.08*8.2ft |
| Tire | 165R14 tires |
| MOQ | 1 Piece |
| Optional Functions | Coffee,fast food,steaks,tacos,drink,Bubble tea, ice-cream,hot dog,pizza,kebab,beer,wine,snack, babershop,pet grooming,games,party,meeting |
| Water System | water sinks,water pump,water heater,clean water tank,waste water tank,water pipe,water divider,water inlet and outlet |
| Electric System | plugs,electric pipe,electric cabinet,external power source,separate switch,light system,heights |



SHOW DETAILS

Standard configuration



BRAKE SYSTEM

Mechanical brakes, with the option of al-ko brakes.



TORSION AXIS

The torsion shaft used can bear 2 tons each.



JACK

The use of high-bearing jacks, each weighing 1 ton.



TYRE

It uses 165, 14-inch 5-hole high speed tires, and the wheels are made of aluminum.



BODY MATERIAL

The walls are made of 304 stainless steel, foamed polyurethane insulation and 304 brushed stainless steel.



TAILLIGHT SYSTEM

Brake lamp, Drive lamp
Turn left & right lamp
Triangle alarm light
Number plate light



INTERNAL DESIGN

Inside can install different cooking equipment to meet different business needs such as refrigerator, coffee machine, fryer, griddle, exhaust fan, oven etc.



INTERNAL DESIGN

Inside can install different cooking equipment to meet different business needs such as refrigerator, coffee machine, fryer, griddle, exhaust fan, oven etc



STAINLESS STEEL WORKBENCH

Stainless steel workbench with cabinet, double layers door, more strong and durable, Will install all workbench refrigerator same level as workbench, and make built in type equipment

PRODUCT CATEGORY

Dimension & Weight



SMS-3000

- 1.Dimension(Only body)
 - 3000*2100*2400mm
 - 9.84*6.88*7.87ft
- 2.Weight
 - 750KG/1660LB



SMS-3500

- 1.Dimension(Only body)
 - 3500*2100*2400mm
 - 11.48*6.88*7.87ft
- 2.Weight
 - 850KG/1875LB



SMS-3800

- 1.Dimension(Only body)
 - 3800*2100*2400mm
 - 12.46*6.88*7.87ft
- 2.Weight
 - 900KG/1990LB



SMS-4000

- 1.Dimension(Only body)
 - 4000*2100*2400mm
 - 13.12*6.88*7.87ft
- 2.Weight
 - 1100KG/2430LB



SMS-4500

- 1.Dimension(Only body)
 - 4500*2100*2400mm
 - 14.76*6.88*7.87ft
- 2.Weight
 - 1200KG/2650LB



SMS-5000

- 1.Dimension(Only body)
 - 5000*2100*2400mm
 - 16.4*6.88*7.87ft
- 2.Weight
 - 1300KG/3090LB



SMS-5500

- 1.Dimension(Only body)
 - 5500*2100*2400mm
 - 18*6.88*7.87ft
- 2.Weight
 - 1500KG/3310LB



SMS-6000

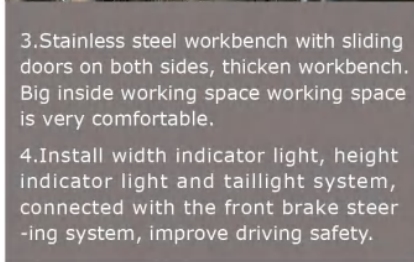
- 1.Dimension(Only body)
 - 6000*2100*2400mm
 - 20*6.88*7.87ft
- 2.Weight
 - 1700KG/3750LB



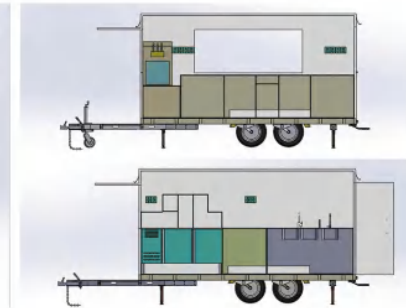
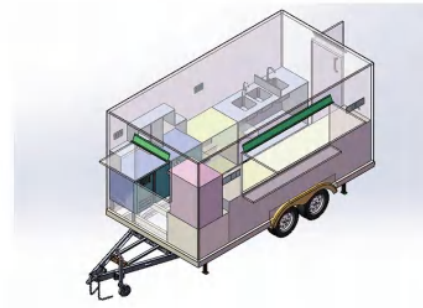
**SMS - 4000
ALUMINUM SQUARE FOOD TRAILER**



1. Aluminum sheet/Composite board /Fiberglass plus insulation layer strong built and long service life.
2. You can choose LED gradient lights which are very beautiful and can be used to attract customers



3. Stainless steel workbench with sliding doors on both sides, thicken workbench. Big inside working space working space is very comfortable.
4. Install width indicator light, height indicator light and taillight system, connected with the front brake steering system, improve driving safety.



SHOW DETAILS

Standard configuration



BRAKE SYSTEM

Equipped with mechanical brake system, with hand brake and safe chains.



TELESCOPIC PEDAL

It uses a retractable pedal for RV, which can weigh 200kg.



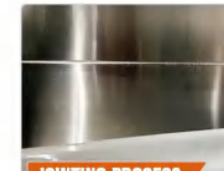
JACK

The use of high-bearing jacks, each weighing 1 ton.



TYRE

It uses 165, 14-inch 5-hole high-speed tires, and the wheels are made of aluminum.



JOINTING PROCESS

Using a seamless process between the workbench and the wall, no glue is required, beautiful and easy to clean.



CUSTOM CABINET

Double side stainless steel cabinet with double cabinet door, bottom seal stainless steel plate, with ring lock.



TORSION AxIs

The torsion shaft used can bear 2 tons each.



DOOR LOCK

Rv door lock, internal and external lock double protection, more secure.



RAIN CURTAIN

Double rain curtain and equipped with sealing strip, sealing effect is better, rain-tight.



SMS - 5800
MIRROR STAINLESS STEEL SQUARE FOOD TRAILER

| | |
|--------------------|---|
| Product Name | Mirror stainless steel square food trailer |
| Model Number | SMS-5800 |
| Certification | COC/DOT/CE/Cargo X/SGS/ISO9001 |
| Voltage | 110V/220V/380V |
| Material | Stainless steel |
| Color | Gold/silver/rose gold |
| Size | 19.02*6.88*7.87ft |
| Tire | 165R14 tires |
| MOQ | 1 Piece |
| Optional Functions | Coffee,fast food,steaks,tacos,drink,Bubble tea, ice-cream,hot dog,pizza,kebab,beer,wine,snack, babershop,pet grooming,games,party,meeting |
| Water System | water sinks,water pump,water heater,clean water tank,waste water tank,water pipe,water divider,water inlet and outnet |
| Electric System | plugs,electric pipe,electric cabinet,external power source,seperate switch,lalight system,heights |



SHOW DETAILS

Standard configuration



RIVET

Body rivets are galvanized rivets, rust and rain proof.



TELESCOPIC PEDAL

It uses a retractable pedal for RV, which can weigh 200kg.



JACK

The use of high-bearing jacks, each weighing 1 ton.



TORSION AXIS

The torsion shaft used can bear 2 tons each.



BRAKE SYSTEM

Equipped with mechanical brake system, with hand brake and safe chains.



JOINTING PROCESS

Using a seamless process between the workbench and the wall, no glue is required, beautiful and easy to clean.



CUSTOM CABINET

Double side stainless steel cabinet with double cabinet door, bottom seal stainless steel plate, with ring lock.



DOOR LOCK

Rv door lock, internal and external lock double protection, more secure.



WINDOW LATCH

The window uses the latch of the RV, which is easy to operate and more secure.



RAIN CURTAIN

Double rain curtain and equipped with sealing strip, sealing effect is better, rain-tight.



TYRE

It uses 165, 14-inch 5-hole high-speed tires, and the wheels are made of aluminum.



WATER SYSTEM

The standard configuration is 2 water tanks, European market 2+1 water sink, USA 3+1 water sink.

WATER SYSTEM

Comply with multinational standards



American standard

3+1 sink



European standard

Two sinks



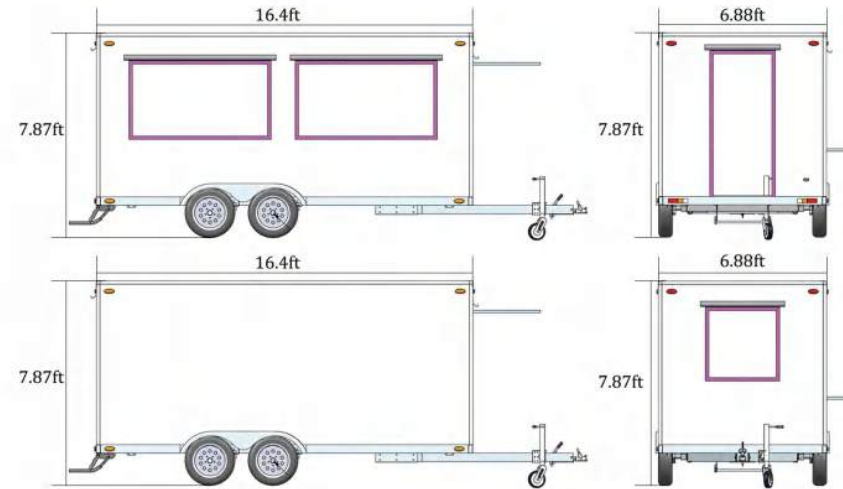
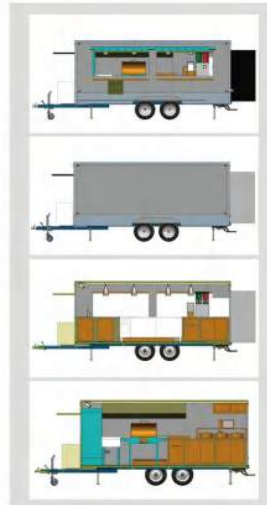
Australian standard

2+1 sink



**SMS - 5000
WRAPPING SQUARE FOOD TRAILER**

| | |
|--------------------|---|
| Product Name | Wrapping Square food trailer |
| Model Number | SMS-5000 |
| Certification | COC/DOT/CE/Cargo X/SGS/ISO9001 |
| Voltage | 110V/220V/380V |
| Material | Composite board |
| Color | Customize colors according to ral color cards |
| Size | 16.4*6.88*7.87ft |
| Tire | 165R13 tires |
| MOQ | 1 Piece |
| Optional Functions | Coffee,fast food,steaks,tacos,drink,Bubble tea, ice-cream,hot dog,pizza,kebab,beer,wine,snack, babershop,pet grooming,games,party,meeting |
| Water System | water sinks,water pump,water heater,clean water tank,waste water tank,water pipe,water divider,water inlet and outnet |
| Electric System | plugs,electric pipe,electric cabinet,external power source,seperate switch,laillight system,heights |



SHOW DETAILS

Standard configuration



BRAKE SYSTEM

Equipped with mechanical brake system,with hand brake and safe chains.



LIGHT SYSTEM

Full sets of tailight system,height & width & height,more safe on road!



TYRE

It uses 165, 14-inch 5-hole high-speed tires, and the wheels are made of aluminum.



WORKBENCH

Double stainless steel workbench with sliding door cabinet, 304# high quality SS material;



STICKER/LOGO

Outside is beautiful composite board material(fiber glass optional).We can make sticker to help you promote brand!

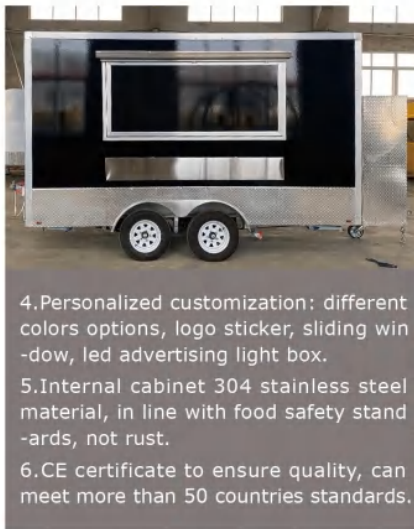


WATER SYSTEM

The standard configuration is 2 water tanks,european market 2+1 water sink,USA 3+1 water sink.



**SMS - 4000
FIBER GLASS STEEL SQUARE FOOD TRAILER**



1. The latest design style, independent design team for your service.
2. 2D and 3D drawings are available for accurate dimensioning.
3. Unique electrophoresis technology can prevent rusting and extend the service life of the trailer.

4. Personalized customization: different colors options, logo sticker, sliding window, led advertising light box.
5. Internal cabinet 304 stainless steel material, in line with food safety standards, not rust.
6. CE certificate to ensure quality, can meet more than 50 countries standards.



| | |
|--------------------|--|
| Product Name | Fiber glass steel Square food trailer |
| Model Number | SMS-4000 |
| Certification | COC/DOT/CE/Cargo X/SGS/ISO9001 |
| Voltage | 110V/220V/380V |
| Material | Fiber glass steel |
| Size | 13.12/6.88/7.87ft |
| Tire | 165R13 tires |
| MOQ | 1 Piece |
| Optional Functions | Coffee, fast food, steaks, tacos, drink, Bubble tea, ice cream, hot dog, pizza, kebab, beer, wine, snack, babershop, pet grooming, games, party, meeting |
| Water System | water sinks, water pump, water heater, clean water tank, waste water tank, water pipe, water divider, water inlet and outlet |

SHOW DETAILS

Standard configuration



TYRE

It uses 165, 14-inch 5-hole high-speed tires, and the wheels are made of aluminum.



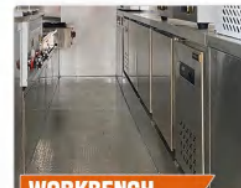
LIGHT SYSTEM

Full sets of tailight system, height & width & height, more safe on road!



BRAKE SYSTEM

Equipped with mechanical brake system, with hand brake and safe chains.



WORKBENCH

Full stainless steel workbench with sliding door cabinet, 304# model high quality SS material, double layers workbench.



WATER SYSTEM

The standard configuration is 2 water tanks, european market 2+1 water sink, USA 3+1 water sink.



STICKER/LOGO

Outside is beautiful composite board material (fiber glass optional). We can make sticker to help you promote brand!



**SMS - 4000
LED LIGHT BOARD BOX SQUARE FOOD TRAILER**

| | |
|--------------------|---|
| Product Name | LED light board box square food trailer |
| Model Number | SMS-4000 |
| Certification | COC/DOT/CE/Cargo X/SGS/ISO9001 |
| Voltage | 110V/220V/380V |
| Material | Composite board |
| Color | Colors can be customized |
| Size | 13.12*6.88*7.87ft |
| Tire | 165R14 tires |
| MOQ | 1 Piece |
| Optional Functions | Coffee,fast food,steaks,tacos,drink,Bubble tea, ice-cream,hot dog,pizza,kebab,beer,wine,snack, babershop,pet grooming,games,party,meeting |
| Water System | water sinks,water pump,water heater,clean water tank,waste water tank,water pipe,water divider,water inlet and outnet |
| Electric System | plugs,electric pipe,electric cabinet,external power source,seperate switch,lailight system,heights |



SHOW DETAILS

Standard configuration



TELESCOPIC PEDAL

It uses a retractable pedal for RV, which can weigh 200kg.



JACK

The use of high-bearing jacks, each weighing 1 ton.



TORSION AXIS

The torsion shaft used can bear 2 tons each.



JOINTING PROCESS

Using a seamless process between the workbench and the wall, no glue is required, beautiful and easy to clean.



CUSTOM CABINET

Double side stainless steel cabinet with double cabinet door, bottom seal stainless steel plate, with ring lock.



DOOR LOCK

Rv door lock, internal and external double protection, more secure.



WINDOW LATCH

The window uses the latch of the RV, which is easy to operate and more secure.



TYRE

It uses 165, 14-inch 5-hole high-speed tires, and the wheels are made of aluminum.



STAR LIGHT

Exquisite star light, each lamp bead has an independent light hole.

WATER SYSTEM

Comply with multinational standards



American standard

3+1 sink



European standard

Two sinks



Australian standard

2+1 sink



**SMS - 5500
PIZZA SQUARE TRAILER**

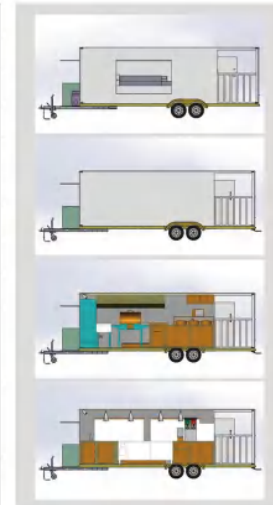


1. The latest design style, independent design team for your service.
2. 2D and 3D drawings are available for accurate dimensioning.
3. Unique electrophoresis technology can prevent rusting and extend the service life of the trailer.

4. Personalized customization: different colors options, logo sticker, sliding win-dow, led advertising light box.
5. Internal cabinet 304 stainless steel material, in line with food safety standards, not rust.
6. CE certificate to ensure quality, can meet more than 50 countries standards.



| | |
|--------------------|---|
| Product Name | Pizza Square trailer |
| Model Number | SMS-5500 |
| Certification | COC/DOT/CE/Cargo X/SGS/ISO9001 |
| Voltage | 110V/220V/380V |
| Material | Composite board |
| Color | Customize colors according to ral color cards |
| Size | 18.04*6.88*7.87ft |
| Tire | 165R13 tires |
| Porch size | 4.92ft/5.24ft |
| Optional Functions | Coffee,fast food,steaks,tacos,drink,Bubble tea, ice-cream,hot dog,pizza,kebab,beer,wine,snack, babershop,pet grooming,games,party,meeting |
| Water System | water sinks,water pump,water heater,clean water tank,waste water tank,water pipe,water divider,water inlet and outnet |
| Electric System | plugs,electric pipe,electric cabinet,external power source,seperate switch,laillight system,heights |



SHOW DETAILS

Standard configuration



BRAKE SYSTEM

Equipped with mechanical brake system,with hand brake and safe chains.



LIGHT SYSTEM

Full sets of tailight system,height & width & height,more safe on road!



TYRE

It uses 165, 14-inch 5-hole high-speed tires, and the wheels are made of aluminum.



WORKBENCH

Double stainless steel workbench with sliding door cabinet, 304# high quality SS material;



STICKER/LOGO

Outside is beautiful composite board material(fiber glass optional).We can make sticker to help you promote brand!



WATER SYSTEM

The standard configuration is 2 water tanks,european market 2+1 water sink,USA 3+1 water sink.



SMV - 4300
SIDE OPENING ROOF VW FOOD TRUCK

| | |
|--------------------|---|
| Product Name | Side opening roof VW food truck |
| Model Number | SMV-4300 |
| Certification | COC/DOT/CE/Cargo X/SGS/ISO9001 |
| Voltage | 110V/220V |
| Material | Galvanized sheet steel |
| Color | Colors can be customized |
| Size | 14.1*5.67*6.33ft |
| Tire | 165R13 tires |
| MOQ | 1 Piece |
| Optional Functions | Coffee,fast food,steaks,tacos,drink,Bubble tea, ice-cream,hot dog,pizza,kebab,beer,wine,snack, babershop,pet grooming,games,party,meeting |
| Water System | water sinks,water pump,water heater,clea water tank,waste water tank,water pipe,water divider,water inlet and outnet |
| Electric System | plugs,electric pipe,electric cabinet,external power source,seperate switch,lalight system,heights |



SHOW DETAILS

Standard configuration



LIGHT SYSTEM

Equipped with perfect circuit system and lighting equipment,high security, good visual effect.



FACE

Beautiful face the front, cute face can be made of any colors,Two headlights and two turning lights front,A sturdy barrier provides protection for your truck.



INTERNAL

The door in the back, inside space is very big, inside width is 1600mm, have double stainless steel work tables, beautiful anti-slip aluminum floor with drainage.



WINDOW

The window can be opened from the side, so when you sale foods or other goods you can open this window to show more things, when you drive it you can close it, very fashion design.Window can be installed LED menu, very attractive.



**SMV - 4300
SIDE OPENING ROOF VW FOOD TRUCK**

| | |
|--------------------|---|
| Product Name | Side opening roof VW food truck |
| Model Number | SMV-4300 |
| Certification | COC/DOT/CE/Cargo X/SGS/ISO9001 |
| Voltage | 110V/220V |
| Material | Galvanized sheet steel |
| Color | Colors can be customized |
| Size | 14.1*5.67*6.33ft |
| Tire | 165R13 tires |
| MOQ | 1 Piece |
| Optional Functions | Coffee,fast food,steaks,tacos,drink,Bubble tea, ice-cream,hot dog,pizza,kebab,beer,wine,snack, babershop,pet grooming,games,party,meeting |
| Water System | water sinks,water pump,water heater, clean water tank,waste water tank,water pipe,water divider,water inlet and outnet |
| Electric System | plugs,electric pipe,electric cabinet,external power source,seperate switch,lailight system,heights |



SHOW DETAILS

Standard configuration



LIGHT SYSTEM

Drive form is 4x2 ,Tonnage level is mini truck, there is two seat can load two passenger in front,enjoy the good feeling in drive!



FACE

Beautiful face the front, cute face can be made of any colors,Two headlights and two turning lights front,A sturdy barrier provides protection for your truck.



LAYOUT

The door in the bark, inside space is very big, inside width is 1600mm, have double stainless steel work tables, beautiful anti-slip aluminum floor with drainage.



WINDOW

The window can be open from top, so when you sale foods or other goods you can open this window to show more things,when you drive it you can close it, very fashion design.



**SMV - 4300
HIGH ROOF VW FOOD TRUCK**



1. A variety of models can be selected, the top and side open can be customized.
2. Independent design teams can customize stickers and star light to attract more customers.
3. It can add engine, the speed can reach 40-60km/h. can drive 80km with full power.
4. Years of manufacturing experience, production technology mature, can meet more than 50 national standards.
5. Perfect after-sales service system, help you use smoothly, faster expansion of fast food business.



| | |
|--------------------|---|
| Product Name | High roof VW food truck |
| Certification | COC/DOT/CE/Cargo X/SGS/ISO9001 |
| Voltage | 110V/220V/380V |
| Material | Fiber glass/Galvanized sheet |
| Tire | 165R14 tires |
| MOQ | 1 Piece |
| Optional Functions | Coffee, fast food, steaks, tacos, drink, Bubble tea, ice cream, hot dog, pizza, kebab, beer, wine, snack, barbershop, pet grooming, games, party, meeting |
| Water System | water sinks, water pump, water heater, clean water tank, waste water tank, water pipe, water divider, water inlet and outlet |

SHOW DETAILS

Standard configuration



LIGHT SYSTEM

Equipped with perfect circuit system and lighting equipment, high security, good visual effect.

FACE

Beautiful face the front, cute face can be made of any colors, Two headlights and two turning lights front, A sturdy barrier provides protection for your truck.



INTERNAL

The door in the back, inside space is very big, inside width is 1600mm, have double stainless steel work tables, beautiful anti-slip aluminum floor with drainage.



**SMV - 4300
LIFT ROOF VW FOOD TRUCK**

| | |
|--------------------|---|
| Product Name | Lift roof VW food truck |
| Model Number | SMV-4300 |
| Certification | COC/DOT/CE/Cargo X/SGS/ISO9001 |
| Voltage | 110V/220V |
| Material | Galvanized sheet steel |
| Color | Colors can be customized |
| Size | 14.1*5.67*6.33ft |
| Tire | 165R13 tires |
| MOQ | 1 Piece |
| Optional Functions | Coffee,fast food,steaks,tacos,drink,Bubble tea, ice-cream,hot dog,pizza,kebab,beer,wine,snack, babershop,pet grooming,games,party,meeting |
| Water System | water sinks,water pump,water heater, clean water tank,waste water tank,water pipe,water divider,water inlet and outnet |
| Electric System | plugs,electric pipe,electric cabinet,external power source,seperate switch,lailight system,heights |



SHOW DETAILS

Standard configuration



LIGHT SYSTEM

Drive form is 4x2 ,Tonnage level is mini truck, there is two seat can load two passenger in front,enjoy the good feeling in drive!



FACE

Beautiful face the front, cute face can be made of any colors,Two headlights and two turning lights front,A sturdy barrier provides protection for your truck.



LAYOUT

The door in the bark, inside space is very big, inside width is 1600mm, have double stainless steel work tables, beautiful anti-slip aluminum floor with drainage.



WINDOW

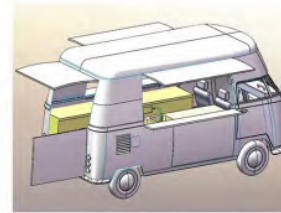
The window can be open from top, so when you sale foods or other goods you can open this window to show more things,when you drive it you can close it, very fashion design.



**SMV - 4300
VW FOOD TRAILER**



1. A variety of models can be selected, the top and side open can be customized.
2. Independent design teams can customize stickers and star light to attract more customers
3. It can add engine, the speed can reach 40-60km/h. can drive 80km with full power.
4. Years of manufacturing experience, production technology mature, can meet more than 50 national standards.
5. Perfect after-sales service system, help you use smoothly, faster expansion of fast food business.



| | |
|--------------------|---|
| Product Name | VW food trailer |
| Certification | COC/DOT/CE/Cargo X/SGS/ISO9001 |
| Voltage | 110V/220V/380V |
| Material | Fiber glass/Galvanized sheet |
| Tire | 165R14 tires |
| MOQ | 1 Piece |
| Optional Functions | Coffee, fast food, steaks, tacos, drink, Bubble tea, ice cream, hot dog, pizza, kebab, beer, wine, snack, barbershop, pet grooming, games, party, meeting |
| Water System | water sinks, water pump, water heater, clean water tank, waste water tank, water pipe, water divider, water inlet and outlet |

SHOW DETAILS

Standard configuration



LIGHT SYSTEM

Equipped with perfect circuit system and lighting equipment, high security, good visual effect.

FACE

Beautiful face the front, cute face can be made of any colors, Two headlights and two turning lights front, A sturdy barrier provides protection for your truck.



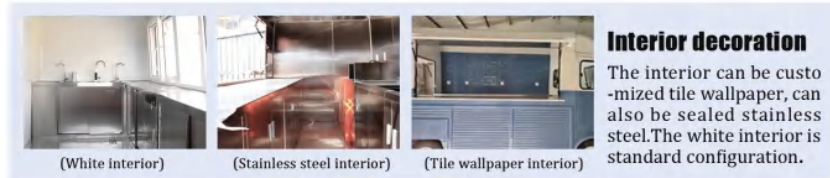
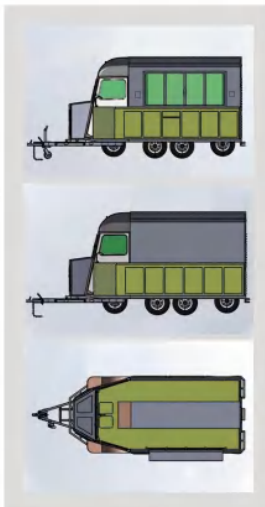
INTERNAL

The door in the back, inside space is very big, inside width is 1600mm, have double stainless steel work tables, beautiful anti-slip aluminum floor with drainage.



**SME - 5020
TOWABLE CITROEN HIGH ROOF FOOD TRAILER**

| | |
|--------------------|---|
| Product Name | Towable Citroen high roof food trailer |
| Model Number | SME-5020 |
| Certification | COC/DOT/CE/Cargo X/SGS/ISO9001 |
| Voltage | 110V/220V/380V |
| Material | Fiber glass/galvanized sheet |
| Color | Customized color from RAL color card |
| Size | 16.46ft*6.56ft*7.38ft |
| Tire | 185R14 tires |
| MOQ | 1 Piece |
| Optional Functions | Coffee,fast food,steaks,tacos,drink,Bubble tea, ice-cream,hot dog,pizza,kebab,beer,wine,snack, babershop,pet grooming,games,party,meeting |
| Water System | water sinks,water pump,water heater,clean water tank,waste water tank,water pipe,water inlet and outnet |
| Electric System | plugs,electric pipe,electric cabinet,external power source,seperate switch,lalight system,heights |



Interior decoration

The interior can be customized tile wallpaper, can also be sealed stainless steel.The white interior is standard configuration.

SHOW DETAILS

Standard configuration



TORSION AXIS

The torsion shaft used can bear 2 tons each.



WINDOW LATCH

The window uses the latch of the RV, which is easy to operate and more secure.



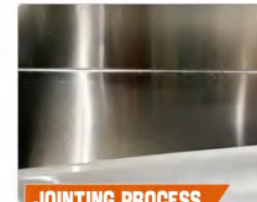
TALLIGHT SYSTEM

Brake lamp and Drive lamp.Turn left and right lamp.Triangle alarm light.Number plate light.



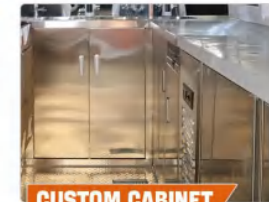
WATER SYSTEM

EU Double sinks, AU 2+1 water sinks,USA 3+1 water sinks with hot and cold water:



JOINTING PROCESS

Using a seamless process between the workbench and the wall, no glue is required, beautiful and easy to clean.

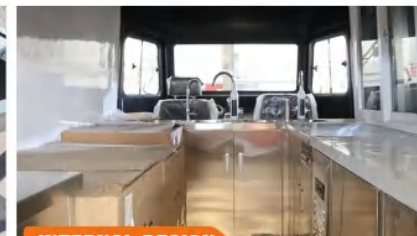


CUSTOM CABINET

Double side stainless steel cabinet with double cabinet door; bottom seal stainless steel plate, with ring lock.



BRAKE SYSTEM

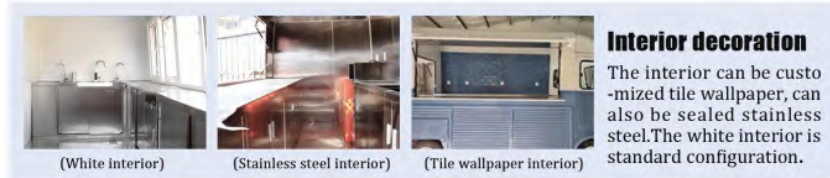
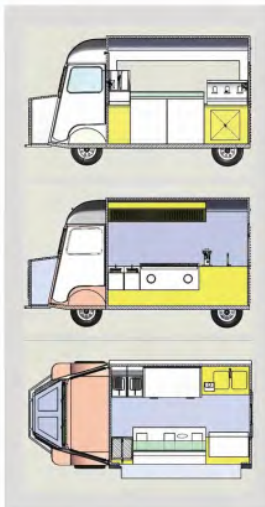


INTERNAL DESIGN



**SME - 5020
ELECTRIC CITROEN HIGH ROOF FOOD TRUCK**

| | |
|--------------------|---|
| Product Name | Electric citroen high roof food truck |
| Model Number | SME-5020 |
| Certification | COC/DOT/CE/Cargo X/SGS/ISO9001 |
| Voltage | 110V/220V/380V |
| Material | Fiber glass/galvanized sheet |
| Color | Customized color from RAL color card |
| Size | 16.46ft*6.56ft*7.38ft |
| Tire | 185R14 tires |
| MOQ | 1 Piece |
| Optional Functions | Coffee,fast food,steaks,tacos,drink,Bubble tea, ice-cream,hot dog,pizza,kebab,beer,wine,snack, babershop,pet grooming,games,party,meeting |
| Water System | water sinks,water pump,water heater,clean water tank,waste water tank,water pipe,water inlet and outnet |
| Electric System | plugs,electric pipe,electric cabinet,external power source,seperate switch,lailight system,heights |



Interior decoration

The interior can be customized with tile wallpaper, can also be sealed stainless steel. The white interior is standard configuration.

SHOW DETAILS

Standard configuration



WINDOW

Use integrated one piece tempered glass, more vintage and classic.

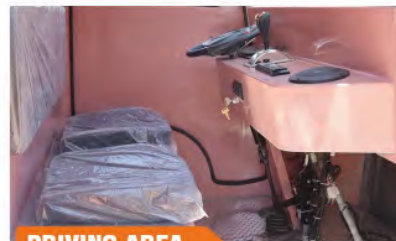
MOULD

We have unique automatic sheet metal mould, make sure each truck is the same and classic.



TIRE

Use high speed tire, more stronger and cool.



DRIVING AREA



INTERNAL DESIGN



**SME - 4800
TOWABLE CITROEN FLAT ROOF FOOD TRAILER**



STAINLESS STEEL WORKBENCH

Stainless steel workbench with cabinet, double layers door, more strong and durable, Will install workbench refrigerator same level as workbench, and make built in type equipment.



INTERNAL DESIGN

Inside can install different cooking equipment to meet different business needs such as refrigerator, coffee machine, fryer, griddle, exhaust fan, oven etc

| | |
|--------------------|---|
| Product Name | Towable Citroen flat roof food trailer |
| Model Number | SME-4800 |
| Certification | COC/DOT/CE/Cargo X/SGS/ISO9001 |
| Voltage | 110V/220V/380V |
| Material | Fiber glass/galvanized sheet |
| Color | Customized color from RAL color card |
| Size | 15.74ft*6.56ft*7.38ft |
| Tire | 185R14 tires |
| MOQ | 1 Piece |
| Optional Functions | Coffee,fast food,steaks,tacos,drink,Bubble tea, ice-cream,hot dog,pizza,kebab,beer,wine,snack, babershop,pet grooming,games,party,meeting |
| Water System | water sinks,water pump,water heater,clean water tank,waste water tank,water pipe,water divider,water inlet and outlet |
| Electric System | plugs,electric pipe,electric cabinet,external power source,separate switch,light system,heights |



(White interior)



(Stainless steel interior)



(Tile wallpaper interior)

SHOW DETAILS

Standard configuration



TIRE

Use high speed tire , more stronger and cool.



STAR LIGHT

Exquisite star lamp, each lamp bead has an independent light hole



TALLIGHT SYSTEM

Brake lamp and Drive lamp. Turn left and right lamp. Triangle alarm light. Number plate light.



WATER SYSTEM

EU Double sinks, AU 2+1 water sinks, USA 3+1 water sinks with hot and cold water:



JOINTING PROCESS

Using a seamless process between the workbench and the wall, no glue is required, beautiful and easy to clean.



CUSTOM CABINET

Double side stainless steel cabinet with double cabinet door, bottom seal stainless steel plate, with ring lock.



**SME - 4800
ELECTRIC CITROEN FLAT ROOF FOOD TRUCK**

| | |
|--------------------|---|
| Product Name | Electric Citroen flat roof food truck |
| Model Number | SME-4800 |
| Certification | COC/DOT/CE/Cargo X/SGS/ISO9001 |
| Voltage | 110V/220V/380V |
| Material | Fiber glass/galvanized sheet |
| Color | Customized color from RAL color card |
| Size | 15.74ft*6.56ft*7.38ft |
| Tire | 185R14 tires |
| MOQ | 1 Piece |
| Optional Functions | Coffee,fast food,steaks,tacos,drink,Bubble tea, ice-cream,hot dog,pizza,kebab,beer,wine,snack, babershop,pet grooming,games,party,meeting |
| Water System | water sinks,water pump,water heater,clean water tank,waste water tank,water pipe,water divider,water inlet and outnet |
| Electric System | plugs,electric pipe,electric cabinet,external power source,seperate switch,light system,heights |



(White interior)



(Stainless steel interior)



(Tile wallpaper interior)

SHOW DETAILS

Standard configuration



TIRE

Use high speed tire , more stronger and cool.



STAR LIGHT

Exquisite star lamp, each lamp bead has an independent light hole



TALLIGHT SYSTEM

Brake lamp and Drive lamp.Turn left and right lamp.Triangle alarm light.Number plate light.



WATER SYSTEM

EU Double sinks, AU 2+1 water sinks,USA 3+1 water sinks with hot and cold water:



JOINTING PROCESS

Using a seamless process between the workbench and the wall, no glue is required, beautiful and easy to clean.



CUSTOM CABINET

Double side stainless steel cabinet with double cabinet door, bottom seal stainless steel plate, with ring lock.



STAINLESS STEEL WORKBENCH

Stainless steel workbench with cabinet, double layers door,more strong and durable, Will install all workbench refrigerator same level as workbench, and make built in type equipment.

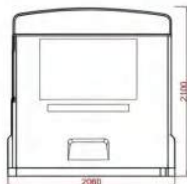
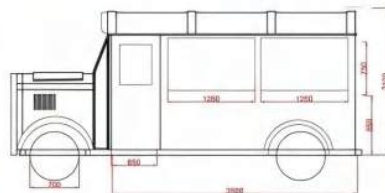
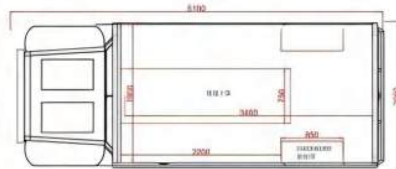


INTERNAL DESIGN

Inside can install different cooking equipment to meet different business needs such as refrigerator, coffee machine, fryer, griddle, exhaust fan, oven etc



**SME - 5100
TRANSFORMERS FOOD TRUCK**



SHOW DETAILS

Standard configuration



STAR LIGHT

Exquisite star light, each lamp bead has an independent light hole.

TIRE

Use high speed tire, more stronger and cool;



FLOOR

Three floors: fiber glass plate, Australian imported insect resistant wood, aluminum diamond plate.

CUSTOM CABINET

Double side stainless steel cabinet with double cabinet door, bottom seal stainless steel plate, with ring lock.





**SME - 5100
STARSHINE CITROEN FOOD TRUCK**



- 1.The latest design style, independent design team for your service.
- 2.Four materials can be selected: mirror stainless steel, brushed stainless steel, iron plate, galvanized plate.
- 3.Unique electrophoresis technology can prevent rusting and extend the service life of the trailer.

4. Personalized customization: different colors options, logo sticker, sliding window, led advertising light box.
5. Internal cabinet 304 stainless steel material, in line with food safety standards, not rust.
6. CE certificate to ensure quality, can meet more than 50 countries standards.



SHOW DETAILS

Standard configuration



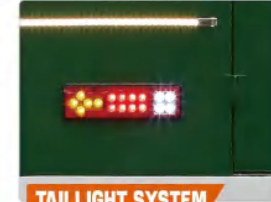
TIRE

- 2 axles with 4 X 165R14 wheels.
- High-speed radial tires.



JOINTING PROCESS

- Using a seamless process between the workbench and the wall, no glue is required, beautiful and easy to clean.



TAILLIGHT SYSTEM

- Brake lamp and Drive lamp
- Turn left and right lamp
- Triangle alarm light
- Number plate light



WORKBENCH

- Stainless steel workbench with cabinet, double layers door more strong and durable, Will install workbench refrigerator.



WATER SYSTEM

- EU Double sinks, AU 2+1 water sinks, USA 3+1 water sinks with hot and cold water.
- Make standard as per different



LIGHT BOARD

- We can make LED advertising board with your logo brand or patterns or English letters.



INTERNAL DESIGN

Inside can install different cooking equipment to meet different business needs such as refrigerator, coffee machine, fryer, griddle, exhaust fan, oven etc



STAINLESS STEEL WORKBENCH

Stainless steel workbench with cabinet, double layers door more strong and durable, Will install workbench refrigerator same level as workbench, and make built in type equipment



**SMTT - 5020
AMERICAN FOOD TRUCK**



1. The latest design style, independent design team for your service.
2. Four materials can be selected: mirror stainless steel, brushed stainless steel, iron plate, galvanized plate.
3. Unique electrophoresis technology can prevent rusting and extend the service life of the trailer.

4. Personalized customization: different colors options, logo sticker, sliding window, led advertising light box.
5. Internal cabinet 304 stainless steel material, in line with food safety standards, not rust.
6. CE certificate to ensure quality, can meet more than 50 countries standards.



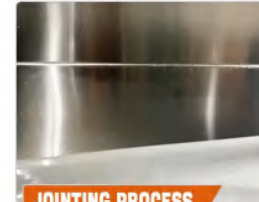
SHOW DETAILS

Standard configuration



TIRE

- 2 axles with 4 X 165R14 wheels.
- High-speed radial tires. White rim



JOINTING PROCESS

- Using a seamless process between the workbench and the wall, no glue is required, beautiful and easy to clean.



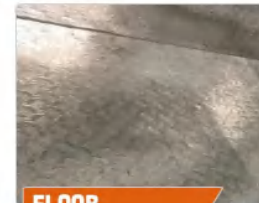
TAILLIGHT SYSTEM

- Brake lamp and Drive lamp
- Turn left and right lamp
- Triangle alarm light
- Number plate light



WORKBENCH

- Stainless steel workbench with cabinet, double layers door more strong and durable, Will install workbench refrigerator.



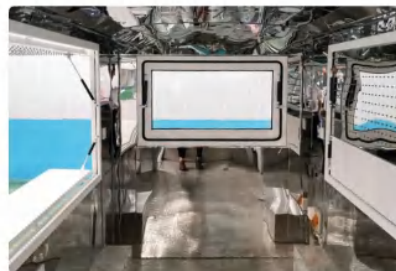
FLOOR

- Three floors: fiber glass plate, Australian imported insect resistant wood, aluminum diamond plate.



STAR LIGHT

- Exquisite star light, each lamp bead has an independent light hole.



INTERNAL DESIGN

Inside can install different cooking equipment to meet different business needs such as refrigerator, coffee machine, fryer, griddle, exhaust fan, oven etc



STAINLESS STEEL WORKBENCH

Stainless steel workbench with cabinet, double layers door, more strong and durable, Will install workbench refrigerator same level as workbench, and make built in type equipment



**SMP - 3150
PIAGGIO BEER CART**



The color of the food cart body can be choose according to your requirement, any color is free. Customized sticker, send your design to us, we will stick it for you.

The style of the wooden cabinet and the number of wine taps can be customized, Functional and usable! Allows you to choose a variety of wines!



SHOW DETAILS

Standard configuration



DRIVING AREA

Wide internal driving space, easy to use, luxury interior decoration makes driving process more comfortable.

ELECTRIC SYSTEM

We can produce the electric system according to your country's standard, different standard plugs, fuse box, connector of city power, connector of generator.



TAILLIGHT SYSTEM

Complete tail light system will be linked to your vehicle via one brake wire, more safe on road!

WINDOW

It opens on the side with large windows on both sides.



CABINERY

Each cabinet is made of high-quality materials that stand the test of time while keeping your cart light on its feet.



**SMP - 3150
PIAGGIO BEER CART**



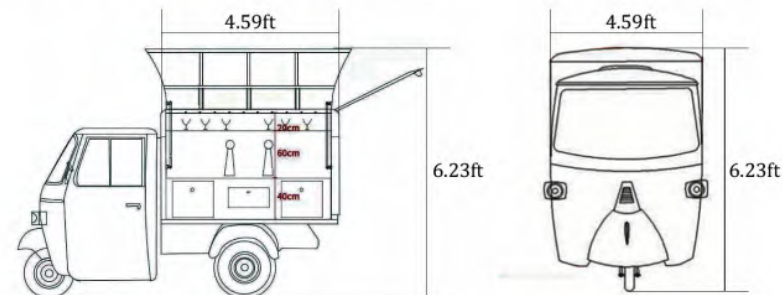
The color of the food cart body can be choose according to your requirement, any color is free. Customized sticker, send your design to us, we will stick it for you.

The style of the wooden cabinet and the number of wine taps can be customized, Functional and usable! Allows you to choose a variety of wines!



PRODUCT SIZE

Support customization service on color, outside design and inside equipments



SHOW DETAILS

Standard configuration



DRIVING AREA

Wide internal driving space, easy to use, luxury interior decoration makes driving process more comfortable.

ELECTRIC SYSTEM

We can produce the electric system according to your country's standard, different standard plugs, fuse box, connector of city power, connector of generator.



TAILLIGHT SYSTEM

Complete taillight system will be linked to your vehicle via one brake wire, more safe on road!





**SMP - 3150
JEWELRY PIAGGIO CART**



The color of the food cart body can be choose according to your requirement, any color is free. Customized sticker, send your design to us, we will stick it for you.

Can be used to sell jewelry, hats and jewelry, each space can be better displayed.



SHOW DETAILS

Standard configuration



DRIVING AREA

Wide internal driving space, easy to use, luxury interior decoration makes driving process more comfortable.

ELECTRIC SYSTEM

We can produce the electric system according to your country's standard, different standard plugs, fuse box, connector of city power, connector of generator.



TAILLIGHT SYSTEM

Complete taillight system will be linked to your vehicle via one brake wire, more safe on road!

WINDOW

The window can be opened from the side, so when you sale goods you can open this window to show more things, when you drive it you can close it, very fashion design.



CABINERY

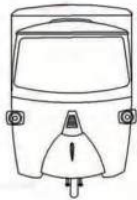
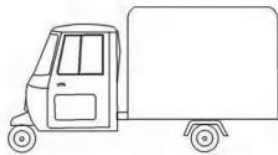
Each cabinet is made of high-quality materials that stand the test of time while keeping your cart light on its feet.



**SMP - 3150
LIFT ROOF PIAGGIO FOOD CART**

DRAWINGS & PARAMETERS

Support customization service on color,outside design and inside equipments



| | |
|------------------|--|
| Product Name | Lift roof piaggio food cart |
| Certification | COC/DOT/CE/Cargo X/SGS/ISO9001 |
| Voltage | 110V/220V |
| Tire | 155R12 TIRES |
| Brake system | hand brake foot brake with taillight system |
| outside material | body is galvanized sheet,front is fiber giass |
| electric system | led lamp,4 plugs,electric cabinet,outside power connection |
| window | Big sales window on both sides, Hydraulic lifting |
| Water System | 3KW motor, 25km/h; 5 pcs of 12V/60A lead acid batteries, can drive 60KM in full charge. need 6-8 hours to charge |

SHOW DETAILS

Standard configuration



DRIVING AREA

Wide internal driving space, easy to use, luxury interior decoration makes driving process more comfortable.

ELECTRIC SYSTEM

We can produce the electric system according to your country's standard, different standard plugs, fuse box, connector of city power,connector of generator.



TAILLIGHT SYSTEM

Complete taillight system will be linked to your vehicle via one brake wire, more safe on road!

WINDOW

Big sales window on both sides, Hydraulic lifting.



CABINERY

Each cabinet is made of high-quality materials that stand the test of time while keeping your cart light on its feet.



SMB - 11000

DOUBLE-DECKER COFFEE BUS

oversized seat / fashionable ndnovel / enjoy comfortable life

TAIL LIGHT SYSTEM

The double-decker food bus is a double-decker structure, the upper layer is usually designed as a dining area, providing spacious dining space, suitable for holding a variety of potlucks, parties and other activities; The lower level serves as a kitchen and storage room for cooking food and storing ingredients, utensils, etc. Customized according to the needs of operators, such as street graffiti, solid color expression, using bright colors and unique shapes to attract the attention of passers-by.



GROUND FLOOR

Kitchen and storage



WATER SYSTEM

For pools that meet American standards, we can also customize different national standards, such as Europe, Australia, etc.



CUSTOM CABINET

Double side stainless steel cabinet with double cabinet door, bottom seal stainless steel plate, with ring lock.



JOINING PROCESS

Using a seamless process between the workbench and the wall, no glue is required, beautiful and easy to clean.



STORAGE ROOM

The spacious storage space can be used to store kitchen equipment and food, or customize it as a temporary lounge.



TOILET

Independent toilet, can be customized a toilet or male and female independent toilet, equipped with a sink.



DRIVING AREA

The front is the driving area, which can be driven freely, and you can easily park it in the right position.

SECOND FLOOR.

Seating area and dining area



ACCOMMODATION SPACE

The standard style vehicle dining area can accommodate 20-30 people, with tables and chairs made for 4 and 2 seats.



U-SHAPED SOFA

The second floor area can be customized U-shaped sofa to meet the needs of dinner parties, parties and other activities.



WINDOW

Windows can be customized push-pull, better view.



STAR LIGHT

Rolls-Royce star light can be customized, independent light hole.



**SMB - 2700
BUS FOOD CART**

oversized seat / fashionable ndnovel / enjoy comfortable life

| | |
|--------------------|---|
| Model Number | SHIMAO-BUS |
| Voltage | 110V/220V/380V |
| POWER | According to equipment power |
| Weight | 650KG |
| Machinery Function | Mobile kitchen |
| Material | Composite Board and Stainless Steel 304 |
| Power(W) | 3-6kw |
| Color: | Can be customized |
| Tyre Model | 145-70 R12 |
| Custom Size | 3M TO 8M LENGTH |
| Warranty | 1 Year |
| Brake type | Mechanical brake+manual brake |
| Certification | CE,ISO9001,DOT |
| Size | 8.85*5.24*7.7ft |
| Brand Name | ORIENTAL SHIMAO |
| Place of Origin | Shandong, China |



SHOW DETAILS

Standard configuration



TIRE

- 2 axes with 4 X 165R14 wheels.
- High-speed radial tires. White rim



DRIVING AREA

- The front is the driving area, which can be driven freely, and you can easily park it in the right position.



TAILLIGHT SYSTEM

- Brake lamp and Drive lamp
- Turn left and right lamp
- Triangle alarm light
- Number plate light



JOINTING PROCESS

- Using a seamless process between the workbench and the wall, no glue is required, beautiful and easy to clean.



WATER SYSTEM

- EU Double sinks, AU 2+1 water sinks, USA 3+1 water sinks with hot and cold water.
- Make standard as per different



LOGO & STICKERS

- The body can be customized logo and stickers.



INTERNAL DESIGN

Inside can install different cooking equipment to meet different business needs such as refrigerator, coffee machine, fryer, griddle, exhaust fan, oven etc

STAINLESS STEEL WORKBENCH

Stainless steel workbench with cabinet, double layers door, more strong and durable, Will install all workbench refrigerator same level as workbench, and make built in type equipment.





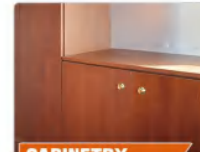
**SMC - 5500
ALUMINUM AIRSTREAM CARAVAN**



| | |
|--------------------------|--|
| Product Name | Aluminum airstream Caravan |
| Model Number | SMC-5500 |
| Certification | COC/DOT/CE/Cargo X/SGS/ISO9001 |
| Voltage | 110V/220V/380V |
| Material | Aluminum |
| Size | 18.04/6.88/8.2ft |
| Tire | 165R14 tires |
| MOQ | 1 Piece |
| 12.46 Feet standard | Bed, U-shaped sofa, lifting table, wardrobe, toilet, sink, mirror, hanging cabinet, refrigerator, lighting downlight, clean water tank 150 liters and sewage tank 170 liters, four jacks, mechanical brakes, 2 14-inch tires. |
| 16.4/18.04 Feet standard | Contains bed, U-shaped sofa, lifting table, wardrobe, toilet, sink, mirror, hanging cabinet, refrigerator, lighting downlight, clean water tank 150 liters and sewage tank 170 liters, four jacks, mechanical brakes, 14 inch tires 4. |

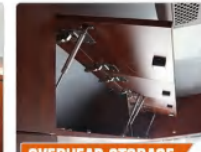
SHOW DETAILS

Standard configuration



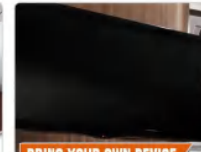
CABINERY

Each cabinet is made of high-quality materials that stand the test of time while keeping your trailer light on its feet.



OVERHEAD STORAGE

Overhead storage compartment are located throughout the entire interior, offering space for food, gear, blankets.



BRING YOUR OWN DEVICE

Bring along your own streaming or HDMI device and play your favorite movies on two Smart TVs.



RESIDENTIAL FAUCET

Shower faucet 2 in 1, convenient and space-saving, to meet your various needs



CEILING AIR CONDITIONING

Air conditioning system quietly, quickly, and efficiently cools the interior of the travel trailer.



RETRACTABLE AWNING

Pull out the awning to make a shady space to relax right outside the front door, and keep your trailer cooler in the sun.



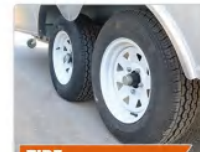
PEEP-PROOF GLASS WINDOW

Our custom windows are riveted right into the frame of the travel trailer.



LIGHT SYSTEM

Full sets of taillight system, height & width & height, more safe on road!



TIRE

- 2 axles with 4x165r14 wheels.
- High-speed radial tires. White rim.



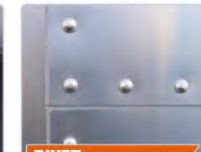
VERTICAL JACKS

- Strong support capacity.
- One pcs can bear 1.5 tons.
- Can folding.



BRAKE SYSTEM

- Material: a frame galvanized seamless tube with mechanical brake and hand brake.
- Safty chains at both sides.



RIVET

- Body rivets are galvanized rivets rust and rain proof.



LIVING ROOM

Gain a little slice of heaven when you choose to read, watch TV, or just dream. Light fills the room from the panoramic windows when seeking revitalization, and when rest is your goal, blackout curtains give you the privacy you desire.



KITCHEN

A burner stove, electric freezer/fridge combo, and deep sink anchor the galley, where you can whip up everything from on-the-go snacks to culinary adventures with regional ingredients

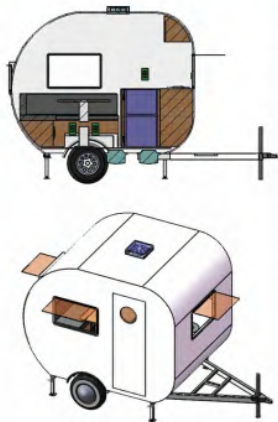


BATHROOM

The independent integrated bathroom is waterproof and easy to clean equipped with all necessary bathing facilities.

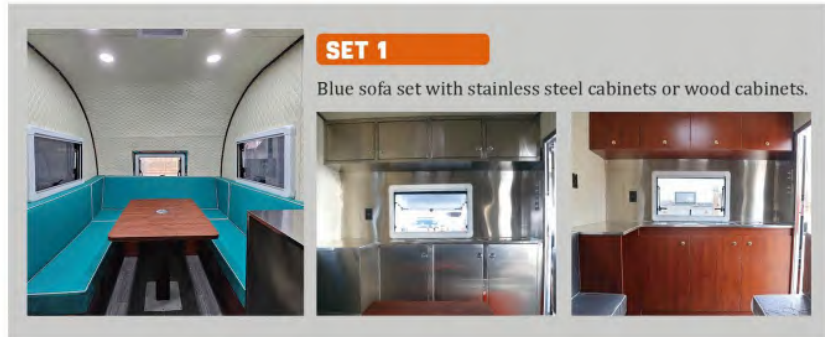


**SMC - 2800
STAINLESS STEEL SPECIAL-SHAPED CARAVAN**



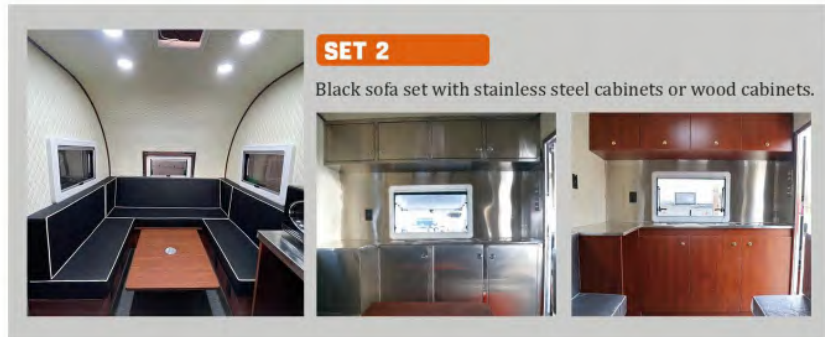
| | |
|--------------------|---|
| Product Name | Stainless steel special-shaped caravan |
| Model Number | SMC-2800 |
| Certification | COC/DOT/CE/Cargo X/SGS/ISO9001 |
| Voltage | 110V/220V/380V |
| Material | Stainless steel |
| Size | 9.18ft |
| Tire | 165R14 tires |
| MOQ | 1 Piece |
| 9.18 Feet standard | Bed, U-shaped sofa, lifting table, wardrobe, sink, hanging cabinet, refrigerator, lighting downlight, clean water tank 150 liters and sewage tank 170 liters, four jacks, mechanical brakes, 2 14-inch tires. |

OPTIONAL
Sofa and cupboard



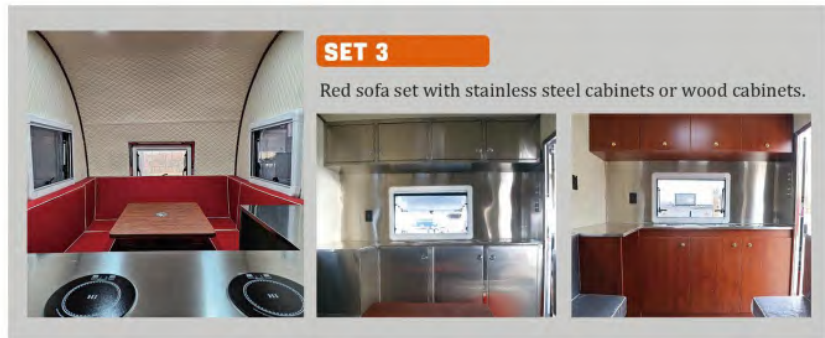
SET 1

Blue sofa set with stainless steel cabinets or wood cabinets.



SET 2

Black sofa set with stainless steel cabinets or wood cabinets.



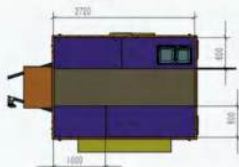
SET 3

Red sofa set with stainless steel cabinets or wood cabinets.





SMR - 2800
HIGH-END FIBER GLASS STEEL ROUND FOOD TRAILER



| | |
|--------------------|--|
| Product Name | High-end Fiber glass steel Round food trailer |
| Model Number | SMR-2800 |
| Certification | COC/DOT/CE/Cargo X/SGS/ISO9001 |
| Voltage | 110V/220V/380V |
| Material | Fiber glass steel |
| Size | 9.18/6.56/7.38ft |
| Tire | 165R14 tires |
| MOQ | 1 Piece |
| Optional Functions | Coffee, fast food, steaks, tacos, drink, Bubble tea, ice cream, hot dog, pizza, kebab, beer, wine, snack, babershop, pet grooming, games, party, meeting |
| Water System | water sinks, water pump, water heater, clean water tank, waste water tank, water pipe, water divider, water inlet and outnet |

PRODUCT CATEGORY

Dimension & Weight



SMS-2200
 Dimension(Only body) · 2200x1650x2350mm · 7.21*5.41*7.7ft
 Weight · 550KG/1212LB



SMS-2800
 Dimension(Only body) · 2800x2000x2350mm · 9.18*6.56*7.7ft
 Weight · 650KG/1433LB



SMS-3000
 Dimension(Only body) · 3000x2000x2350mm · 9.84*6.56*7.7ft
 Weight · 700KG/1540LB



SMS-3500
 Dimension(Only body) · 3500x2000x2350mm · 11.48*6.56*7.7ft
 Weight · 800KG/1763LB



SMS-4000
 Dimension(Only body) · 4000x2000x2350mm · 13.12*6.56*7.7ft
 Weight · 1000KG/2204LB



**SMR - 2300
FIBER GLASS STEEL ROUND FOOD TRAILER**



- 1.The latest design style, independent design team for your service.
- 2.2D and 3D drawings are available for accurate dimensioning.
- 3.Unique electrophoresis technology can prevent rusting and extend the service life of the trailer.

4. Personalized customization: different colors options, logo sticker, sliding window, led advertising light box.
- 5.Internal cabinet 304 stainless steel material, in line with food safety standards, not rust.
- 6.CE certificate to ensure quality, can meet more than 50 countries standards.



SHOW DETAILS

Standard configuration



TYRE

It uses 165, 14-inch 4-hole high-speed tires, and the wheels are made of aluminum.



LIGHT SYSTEM

Full sets of taillight system, height & width & height, more safe on road!



BRAKE SYSTEM

Equipped with mechanical brake system, with hand brake and safe chains.



CUSTOM CABINET

Double side stainless steel cabinet with double cabinet door, bottom seal stainless steel plate, with ring lock.



WATER SYSTEM

Customized multi-national standard pool, such as American standard, European standard, Australian standard, etc.



STICKER/LOGO

Outside is beautiful composite board material (fiber glass optional). We can make sticker to help you promote brand!





**SMR - 2800
MIRROR STAINLESS STEEL ROUND TRAILER**



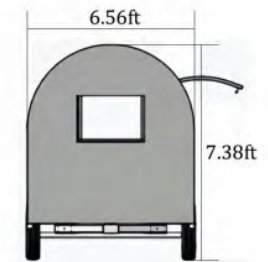
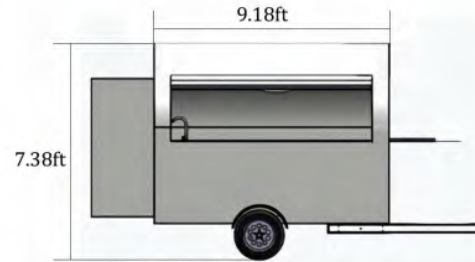
INTERNAL DESIGN

Inside can install different cooking equipment to meet different business needs such as refrigerator, coffee machine, fryer, griddle, exhaust fan, oven etc



STAINLESS STEEL WORKBENCH

Stainless steel workbench with cabinet, double layers door, more strong and durable, Will install all workbench refrigerator same level as workbench, and make built in type equipment



SHOW DETAILS

Standard configuration



RIVET

Body rivets are galvanized rivets, rust and rain proof.



TELESCOPIC PEDAL

It uses a retractable pedal for RV, which can weigh 200kg.



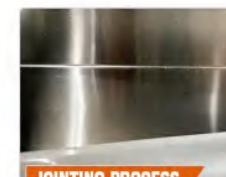
JACK

The use of high-bearing jacks, each weighing 1 ton.



TYRE

It uses 165, 14-inch 5-hole high-speed tires, and the wheels are made of aluminum.



JOINTING PROCESS

Using a seamless process between the workbench and the wall, no glue is required, beautiful and easy to clean.



CUSTOM CABINET

Double side stainless steel cabinet with double cabinet door, bottom seal stainless steel plate, with ring lock.



TORSION AXIS

The torsion shaft used can bear 2 tons each.



DOOR LOCK

Rv door lock, internal and external lock double protection, more secure.



RAIN CURTAIN

Double rain curtain and equipped with sealing strip, sealing effect is better, rain-tight.



**SMD - 4000
VINTAGE SPECIAL-SHAPED FOOD TRAILER**



- 1.The latest design style, independent design team for your service.
- 2.2D and 3D drawings are available for accurate dimensioning.
- 3.Unique electrophoresis technology can prevent rusting and extend the service life of the trailer.



4. Personalized customization: different colors options, logo sticker, sliding window, led advertising light box.
- 5.Internal cabinet 304 stainless steel material, in line with food safety standards, not rust.
- 6.CE certificate to ensure quality, can meet more than 50 countries standards.



| | |
|--------------------|---|
| Product Name | Vintage special-shaped food trailer |
| Model Number | SMD-4000 |
| Certification | COC/DOT/CE/Cargo X/SGS/ISO9001 |
| Voltage | 110V/220V/380V |
| Material | Carved board |
| Size | 13.12/6.56/7.38ft |
| Tow bar | 3.93ft |
| MOQ | 1 Piece |
| Optional Functions | Coffee, fast food, steaks, tacos, drink, Bubble tea,ice cream,hot dog, pizza, kebab, beer, wine, snack,babershop, pet grooming, games, party, meeting |
| Water System | water sinks, water pump, water heater, clean water tank, waste water tank, water pipe, water divider, water inlet and outnet |

SHOW DETAILS
Standard configuration



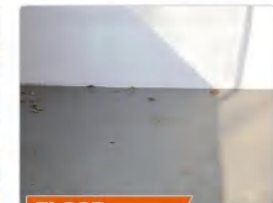
WORKBENCH

Stainless steel 304,cabinet with sliding door



WINDOW

One selling window + front window



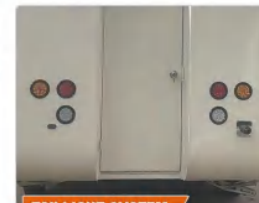
FLOOR

Nonslip aluminium floor.



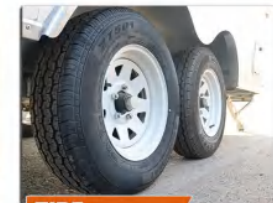
BRAKE SYSTEM

Mechanical brake



TAILLIGHT SYSTEM

brake light, turn light, driving light.



TIRE

165-R13 Performance tires



**SMD - 2800
STAINLESS STEEL VINTAGE FOOD TRAILER**



- 1.The latest design style, independent design team for your service.
- 2.2D and 3D drawings are available for accurate dimensioning.
- 3.Unique electrophoresis technology can prevent rusting and extend the service life of the trailer.

4. Personalized customization: different colors options, logo sticker, sliding window, led advertising light box.
- 5.Internal cabinet 304 stainless steel material, in line with food safety standards, not rust.
- 6.CE certificate to ensure quality, can meet more than 50 countries standards.



| | |
|--------------------|---|
| Product Name | Stainless steel Vintage food trailer |
| Model Number | SMD-2800 |
| Certification | COC/DOT/CE/Cargo X/SGS/ISO9001 |
| Voltage | 110V/220V/380V |
| Material | Stainless steel |
| Size | 9.18/6.56/7.38ft |
| Tow bar | 3.93ft |
| MOQ | 1 Piece |
| Optional Functions | Coffee, fast food, steaks, tacos, drink, Bubble tea, ice cream, hot dog, pizza, kebab, beer, wine, snack, barbershop, pet grooming, games, party, meeting |
| Water System | water sinks, water pump, water heater, clean water tank, waste water tank, water pipe, water divider, water inlet and outlet |

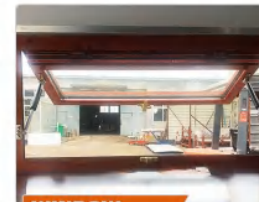
SHOW DETAILS

Standard configuration



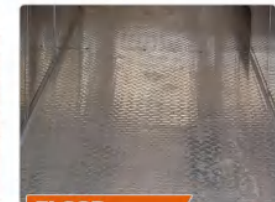
WORKBENCH

Stainless steel 304, cabinet with sliding door



WINDOW

One selling window + front window



FLOOR

Non-slip aluminium floor.



BRAKE SYSTEM

Mechanical brake



TAILLIGHT SYSTEM

brake light, turn light, driving light.



TIRE

165-R13 Performance tires



**SMA - 5000
PET GROOMING AIRSTREAM TRAILER**

1. Pet grooming trailer can provide one-stop service for pet owners, the vehicle is equipped with professional beauty equipment and tools, with bathing, trimming, modeling and other functions, and according to the location of the owner to provide on-site service.



2. Pet grooming trailer can choose custom materials and colors, you can also provide stickers to decorate the vehicle, make your vehicle more eye-catching.



| | |
|-----------------|---|
| Product Name | Pet Grooming Airstream trailer |
| Model Number | SMA-5000 |
| Certification | COC/DOT/CE/Cargo X/SGS/ISO9001 |
| Voltage | 110V/220V/380V |
| Material | Stainless steel |
| Size | 16.4/7.08/8.2ft |
| Tow bar | 3.93ft |
| MOQ | 1 Piece |
| Electric system | plugs, electric pipe, electric cabinet, external power source, separate switch, taillight system, height lights, width lights |
| Water System | water sinks, water pump, water heater, clean water tank, waste water tank, water pipe, water divider, water inlet and outlet |

FEATURE

A one-stop shop for pet owners



TAKE A BATH



SHARING



DYE



DENTAL CARE



HAIR CARE



EAR CARE

Toilet trailer

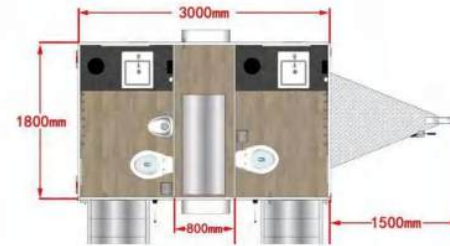


SMW - 3000 TOILET TRAILER

oversized seat / fashionable ndnovel / enjoy comfortable life

PRODUCT INTRODUCTION

Portable toilet facilities can be dragged, with a complete sanitation system, including flushing, sewage, water storage and other functions. Can be divided into single type, multi-type, combined type and so on. Single-unit toilet trailers are usually small in size and suitable for a single user group. Multi-body and combined toilet trailers can accommodate more people at the same time. Sizes can be customized, and materials can be selected from composite panels and fiber glass panels.



The toilet can be customized, with large space and complete facilities, which can be provided to customers to increase the return rate. The internal washbasin, toilet and other facilities are complete, and you can customize the internal equipment freely.

STANDARD CONFIGURATION



BRAKE SYSTEM



TOILET



MIRROR



INTERIOR DESIGN



WATER PUMP



WASH BASIN

OPTIONAL CONFIGURATION



SHOWER CUBICLE



100L OR 200L WATER TANK



AIR CONDITIONER



**SMF - 2800
REFRIGERATOR TRAILER**

PRODUCT INTRODUCTION

The refrigerated trailer is mainly suitable for long-distance transportation and large quantities of goods. It has excellent sealing properties, which can prevent the influence of external temperature on the internal goods and ensure that the goods maintain a constant temperature during transportation. Refrigerated trailers are used to transport foods that need refrigeration, such as meat, seafood, dairy products, vegetables and fruits. It can extend the shelf life of food and ensure the freshness and taste of food during transportation.



The refrigerated trailer is equipped with advanced refrigeration equipment and temperature control system, which can accurately adjust the temperature according to the needs of the cargo to meet the cold storage needs of different cargo.

INTERIOR SPACE



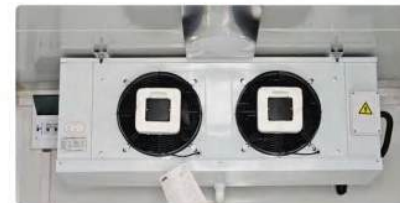
The interior space is spacious, can store a variety of goods, while you can install stainless steel cabinets.

BRAKE SYSTEM

Equipped with mechanical brake system with hand brake and safe chains, strong and durable, improve driving safety.



COOLING SYSTEM



By combining various mechanisms such as the compression refrigeration cycle and the principle of evaporative cooling, it achieves efficient refrigeration and precise control of the temperature inside the compartment.

185/65R14 TYRE

2 axles with 4 X 165R14 wheels. high-speed radial tires. White rim.



KITCHEN EQUIPMENT OPTIONAL



RCU Roof



Roof Air Conditioner



Air Conditioner



Workbench Refrigerator



Beverage Refrigerator



Ice cream freezer display



Freezer with glass sliding door



Refrigerator with saladsink



Popcorn machine



Salad display cooler



Instant kitchen water heater



Electric single fryer



Gas deep fryer



Gas hot plate



Electric half pit pickpocket



Gas Lava rock grill



Gas grill plate



Electric Cotton candy machine



Commercial stove



Gas smokeless grill



Counter top gas Pasta cooker



Counter top chips warmer



Counter top gas range



Gas kebab machine 4 burners



Automatic coffee machine



Bean grinder



Electric panini machine



Commercial blender



Counter top soft Ice cream machine



Slush Machine three tanks



Gas pizza oven



Microwave oven



Electric 6-tank bain marie / Steam Table



Gas 6-cylinder hot soup pool



Three tanks juice machine



Wood pizza oven



Double electric crepe maker



Curved glass food display warmer



Food display warmer Temperature



Counter top Display fridge



Floor cake display cabinet



Silent diesel Generator



Hot dog machine



Crisp machine

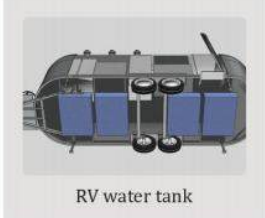


Waffle baker with double plate

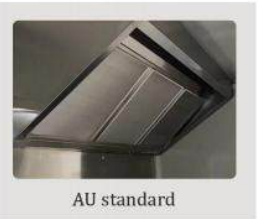
KITCHEN EQUIPMENT OPTIONAL

INTERNAL ACCESSORIES OPTIONAL

WATER TANK:



RANGE HOOD:



RANGE HOOD:



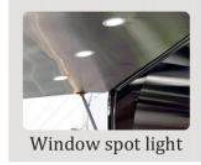
WATER SINKS:



WHEEL:



LED STRIP LIGHT:



SOCKET:



Axle:



INTERNAL ACCESSORIES OPTIONAL



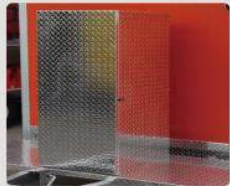
RCU roof



Generator box



Gas holder



Gas tank box



Aluminum plate



AC holder



Awning



Top shelves



Vent



Top cabinet



Stainless steel wall



Customized door

INTERNAL ACCESSORIES OPTIONAL



Ice storage tank



Sliding window



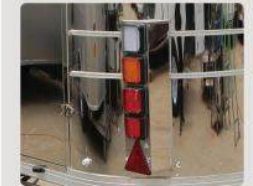
trash can



Drawer



Gas pipe



EU standard taillight



380V external power plug



Electric jacks



Floodlight